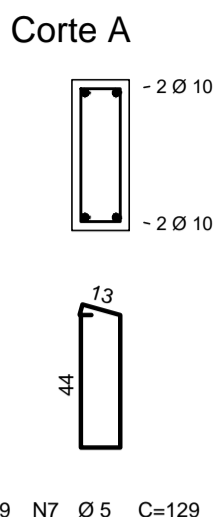
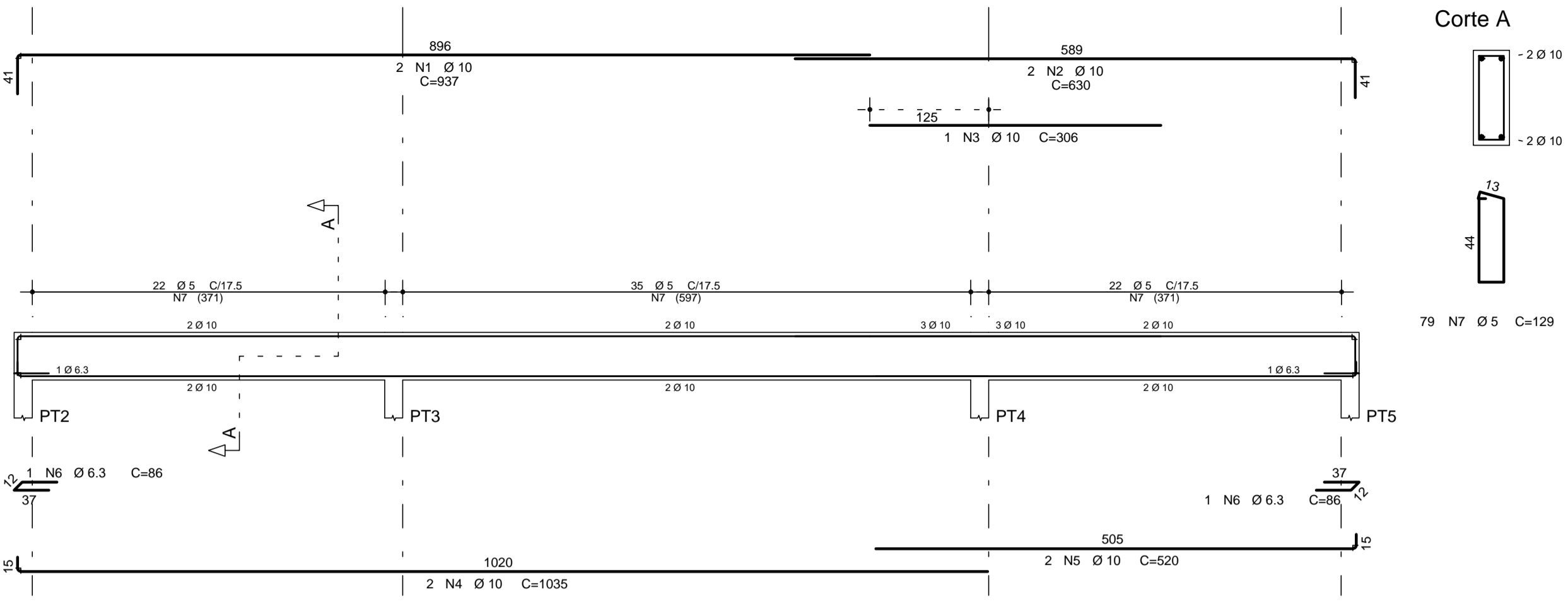
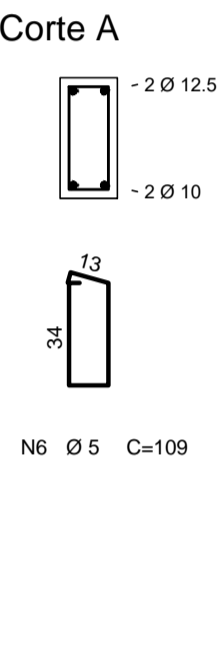
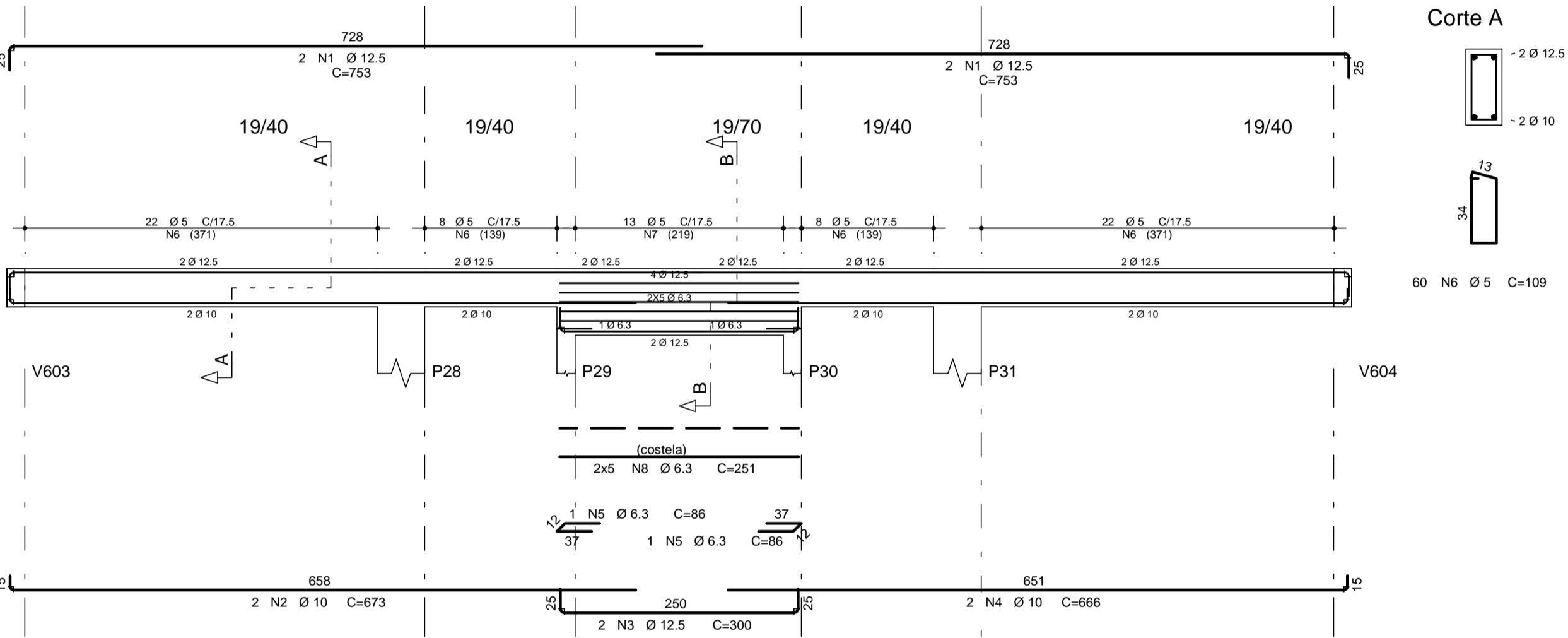


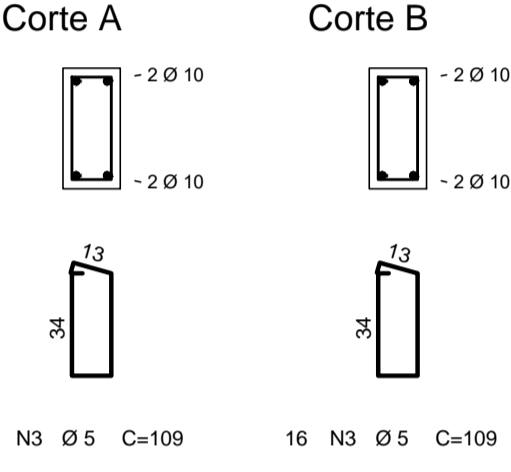
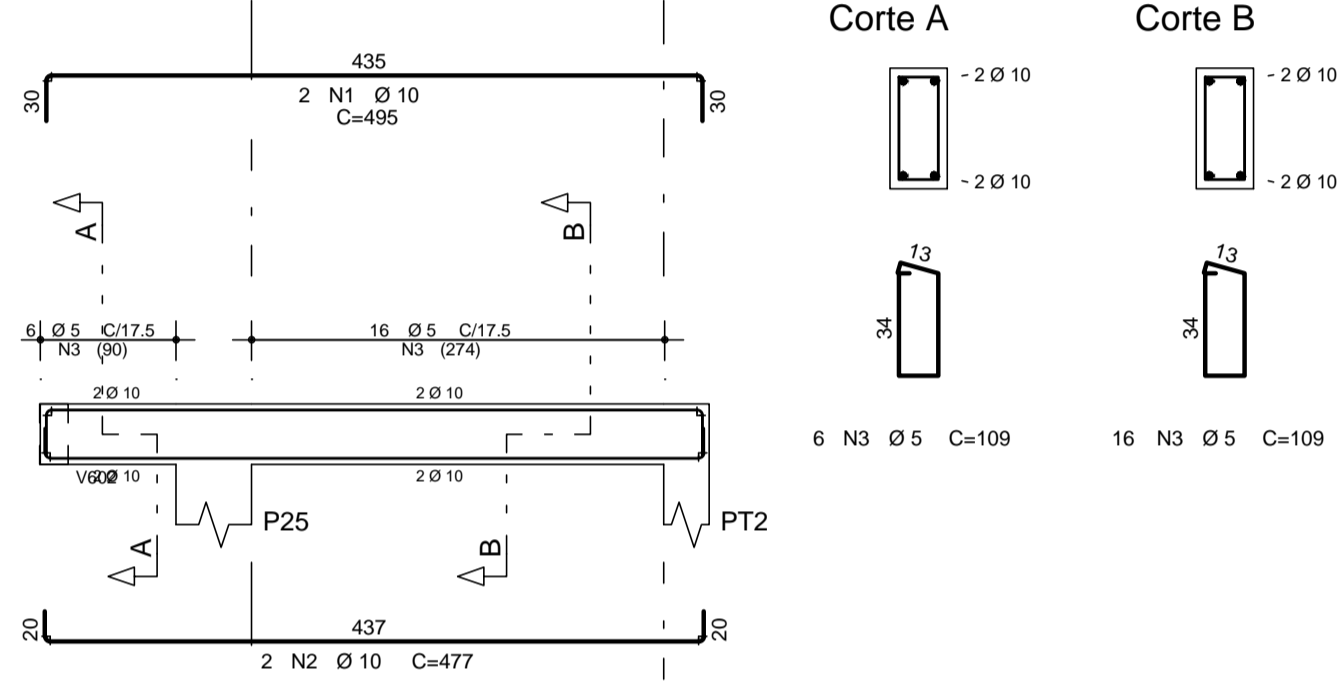
V601 19/50



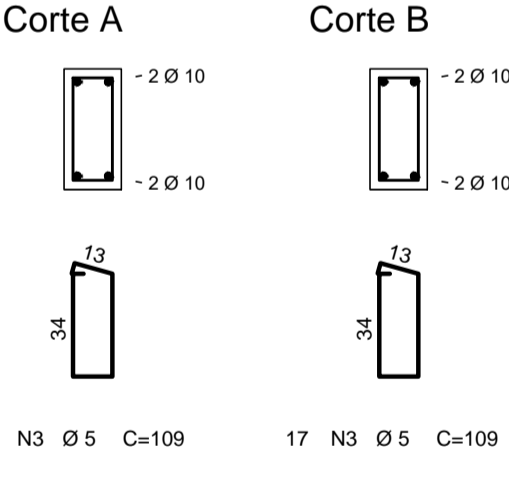
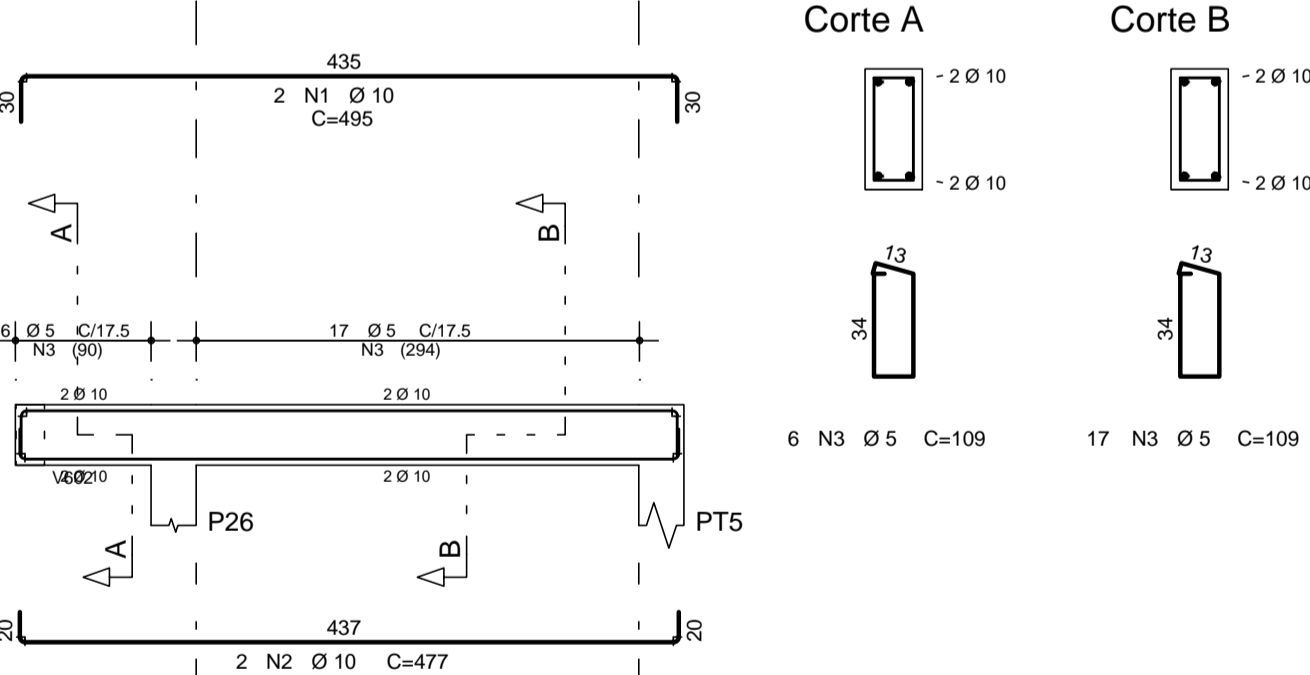
V602 19/40 19/70



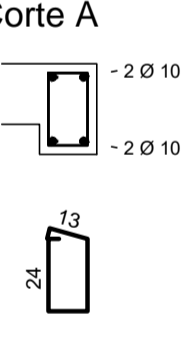
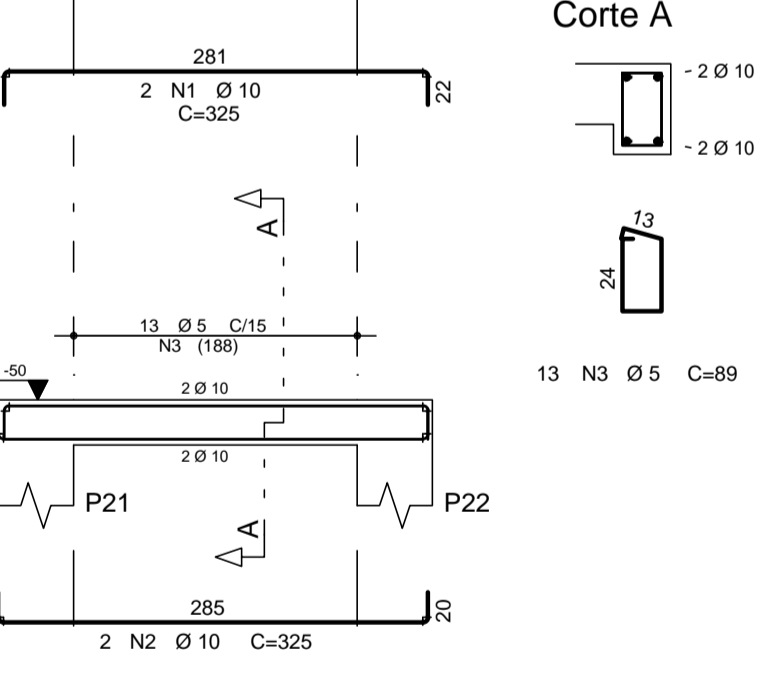
V603 19/40



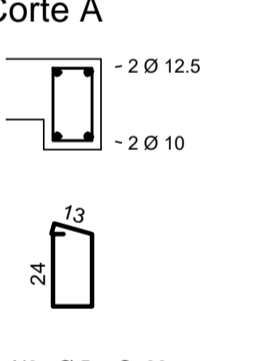
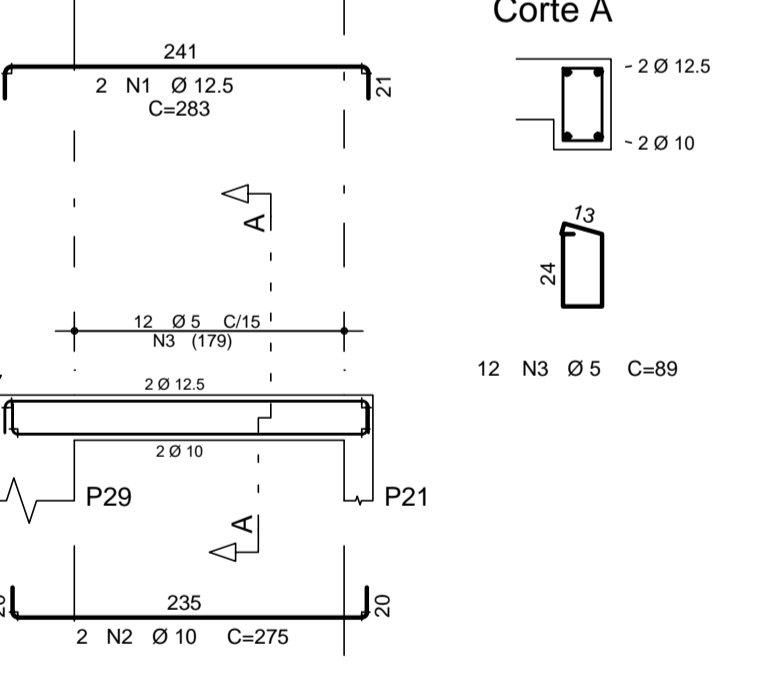
V604 19/40



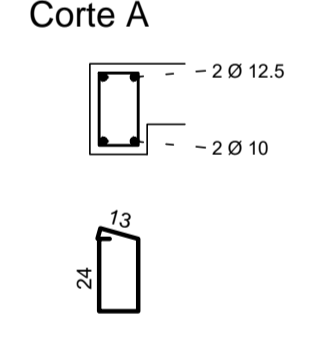
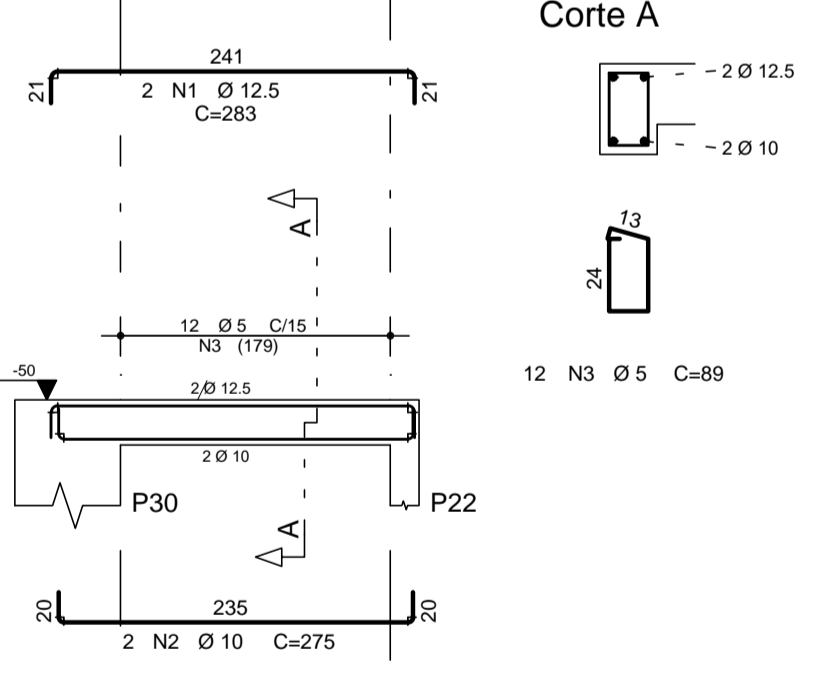
V605 19/30



V606 19/30



V607 19/30



AÇO	POS	BIT (mm)	QUANT	COMPRIMENTO UNIT (cm)	TOTAL (cm)
V601					
50A	1	10	2	937	1874
50A	2	10	2	630	1260
50A	3	10	1	306	306
50A	4	10	2	1035	2070
50A	5	10	2	520	1040
50A	6	6.3	2	86	172
60B	7	5	79	129	10191
V602					
50A	1	12.5	4	753	3012
50A	2	10	2	673	1346
50A	3	12.5	2	300	600
50A	4	10	2	666	1332
50A	5	6.3	2	86	172
60B	6	5	60	109	6540
60B	7	5	13	169	2197
50A	8	6.3	10	251	2510
V603					
50A	1	10	2	495	990
50A	2	10	2	477	954
60B	3	5	22	109	2398
V604					
50A	1	10	2	495	990
50A	2	10	2	477	954
60B	3	5	23	109	2507
V605					
50A	1	10	2	325	650
50A	2	10	2	325	650
60B	3	5	13	89	1157
V606					
50A	1	12.5	2	283	566
50A	2	10	2	275	550
60B	3	5	12	89	1068
V607					
50A	1	12.5	2	283	566
50A	2	10	2	275	550
60B	3	5	12	89	1068

RESUMO AÇO CA 50-60				
AÇO	BIT (mm)	COMPR (m)	PESO (kg)	
60B	5	271	42	
50A	6.3	29	7	
50A	10	155	96	
50A	12.5	47	46	
Peso Total 60B =			42 kg	
Peso Total 50A =			148 kg	
VOLUME DE CONCRETO =			3,30 m³	

REVISÕES:

DATA: _____ VISTO: _____

EDIF 3

DIVISÃO DE PROJETOS DE EDIFICAÇÕES - AVENIDA SÃO JOÃO, 473 - 17º ANDAR CEP 01035-000 - TEL.: 3337-9555

DIRETORA: ENG. BEATRIZ LOMONACO F. GOMES

CONTRATADA: EXATA ENGENHARIA E COMÉRCIO LTDA.

EXATA

R. RIACHUELO, 240 - CENTRO CAMPINAS/ SP - CEP: 13075-320 FONE/FAX: (19) 309-1034

SITE: WWW.EXATACAMPINAS.COM.BR EMAIL: CONTATO@EXATACAMPINAS.COM.BR

AUTOR DO PROJETO: ENG. EDUARDO PRATA

PMSP - SIURB - EDIF

PREFEITURA DE SÃO PAULO - SECRETARIA DE INFRA-ESTRUTURA URBANA E OBRAS - DEPARTAMENTO DE EDIFICAÇÕES

EMEI PADRÃO EDIF 2019 09S (NORMAL)

COORDENADOR: VÁRIOS - SP

PROJETO ESTRUTURAL - CONCRETO ARMADO SUPRAESTRUTURA

DETALHE ARMAÇÃO DAS VIGAS - V600

EQUIPE TÉCNICA DA DIV. TEC. DE PROJETOS - EDIF 3	ANÁLISE DE ARQUITETURA	ANÁLISE DE ESTRUTURA	ANÁLISE DE ELÉTRICA	ANÁLISE DE HIDRÁULICA
	ARQ. FERNANDO A. TAVARES - CAU A20360-2	ENG. João Luis Maranhão Biscaia - CREA Nº 170.587.456-8	ENG. VALDIR PIETROBON - CREA Nº 0601115144	ENG. ZELIA R. SERENO - CREA Nº 0601578832

ASSINATURA	

REVISÃO	DATA	FEITO POR	APROVADO POR

COD. DO MODELO	EMPENHO
16.43.776.SE	024.5.19

ESCALA
1:50

FOLHA
S - 23/33